

Standard Features

Interior

Cabinets

- High Pressure Laminate Countertops
- Stylish Picture Frame Flat Panel Cabinet Doors

Decor

- Color-Coordinated Designer Interiors
- Embossed Vinyl Flooring
- Padded Dinette Seat & Back Cushions
- Mini-Blinds at All Windows Except Bunks

Kitchen & Living Area

- 3 cu. ft. Dometic® Gas/Electric Refrigerator on 7' Models
- 6 cu. ft. RM2652 Dometic® Gas/Electric Refrigerator on 8' Models
- Two-Burner Wedgewood® Range Top (7' Models)
- Wedgewood® 3-Burner Range w/Oven (8' Models)
- 0.7 cu. ft. Microwave Oven w/Turntable & Clock
- Acrylic Kitchen Sink w/Faucet (Double Bowl on 8' Models)
- 12 Volt Demand Water Pump
- Furnace (16,000 Btu on 7' Models; 25,000 Btu on 8' Models)
- 5,000 Btu Air Conditioner on 7' Models
- 35 amp 12 Volt Power Converter w/120 Volt Load Center
- 6 Gallon Gas Water Heater
- TV Antenna w/Living Area Jack
- Power Range Hood on 8' Models
- Wall Border on 8' Models

Bath

- ABS Tub w/Tub Faucet, Shower Hose & Head
- Shower Curtain
- Hand Flush Thetford Toilet
- Towel Ring & Toilet Paper Holder
- ABS Tub Surround & Glass Shower Enclosure on Models 239B & 277B

Exterior

Roof Construction

- Seamless One-Piece Roof (Aluminum on 7' Models; Rubber on 8' Models)
- Awning Drip Rail & Down Spouts

Wall Construction

- Wall Studs on 16" Centers (Maximum)
- Steel Strap Reinforcement on Walls for Superior Durability
- R-7 Settle-Resistant Insulation
- Twist Locks on All Storage Doors
- Clamp-Ring Radius Corner / Tinted Safety Glass Windows
- Patio Convenience Light
- Radius Entry Door w/Screen
- Assist Handle at Entry Door
- Custom Styled Exterior Graphics

Chassis Construction

- Cambered Steel Chassis w/Steel Outriggers
- Battery Rack
- Chassis-Mounted Entry Step
- Electric Brakes at All Wheels
- Radial Tires
- Spoke Steel Wheels
- Safety Chains & Breakaway Safety Switch
- Two Stabilizer Jacks in Rear
- Sidewinder Tongue Jack w/Foot
- Double Entry Step (On Most 8' Models)

Floor Construction

- 5/8" Tongue & Groove Floor Decking
- Tightly Sealed Woven Polyethylene Underbelly

Features

- 20 lb. LP Propane Tank (Single on 7' Models; Double on 8' Models)
- Holding Tanks w/Drain Outlet
- Rear Bumper w/Sewer Hose Carrier
- Carefree® Pioneer Lite Side Awning

Security & Safety

- Smoke Detector
- Propane Leak Detectors
- Carbon Monoxide Alarm
- Flush Door Latch w/Integral Dead Bolt Lock
- Fire Extinguisher

Options

- Double 30 lb. Propane Tank (on 8' Wide Models)
- Propane Tank Cover
- Spare Tire, Carrier & Cover
- Stabilizer Jacks in Front
- AM/FM/CD Stereo w/Outside Speakers
- Monitor Panel
- Power Vent in Bath
- ABS Tub/Shower Surround
- Glass Shower Door (8' Wide Models)

Chuck Wagon Package (8' Models Only)

- Stabilizer Jacks (4)
- Spare Tire Kit
- Park Cable Hook-Up
- Monitor Panel
- Bedspread & Headboard
- Propane Bottle Cover
- 13,500 Btu Air Conditioner



Go RVing.



NO-NONSENSE WARRANTY

Manufacturing defects reported to Skyline within one year after original retail delivery of your new Travel Trailer by an authorized dealer will be corrected without charge and within reasonable times. Excluded are misuse (including lack of reasonable maintenance), minor imperfections, alterations, and dealer or owner improper transportation, installation, or hookup.

This warranty gives you specific legal rights. You may have other rights which vary from state to state.

Skyline's suppliers often provide additional warranties on their components beyond the Skyline factory bumper-to-bumper warranty. For example — the range, water heater, furnace, converter, air conditioner, refrigerator, microwave and awning carry two-year warranties. Ask your dealer for full details.

Manufacturer's Notice: All specifications, equipment, and prices are subject to change without prior notice. Production of all models subject to seasonal scheduling. Skyline Corporation reserves the right to improve a model without incorporating these changes in similar models produced at an earlier date.

Consult your automobile dealer and your recreational vehicle dealer to assure the proper match between tow vehicle and trailer. Tow vehicle and recreational unit must be properly equalized for efficient product performance and safety. Before you purchase your recreational vehicle, carefully consider the number of people it will accommodate and its end use. Manufacturer's load capacity restrictions and recommendations must be followed for safe and efficient product performance.

Your Retailer, an independent contractor, who is not an agent of Skyline Corporation, is the party responsible for your purchase contract and any additions, deletions, alterations, or attachments made to or in your recreational vehicle.

©04/12, PRINTED IN THE U.S.A.

2013 Travel Trailers



Your local **WAGONEER** dealer is:

SKYLINE

BRINGING AMERICA HOME. BRINGING AMERICA FUN.

Effective April 2012

SKYLINE
BRINGING AMERICA HOME. BRINGING AMERICA FUN.

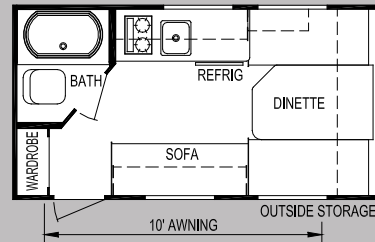
For the name of your nearest Skyline-built RV dealer, call:
Mansfield, Texas 1-800-962-7773

Visit us at our Web Site at www.skylinecorp.com

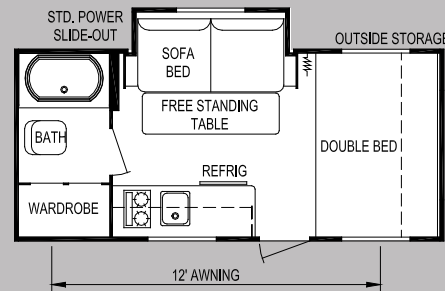
Travel Trailers (7' Wide Models)



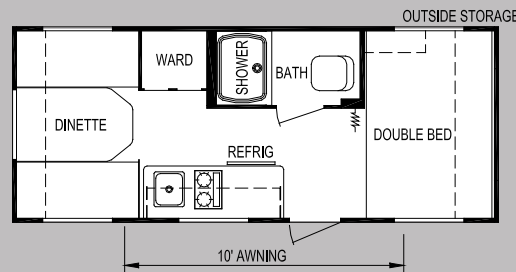
Travel Trailers (8' Wide Models)



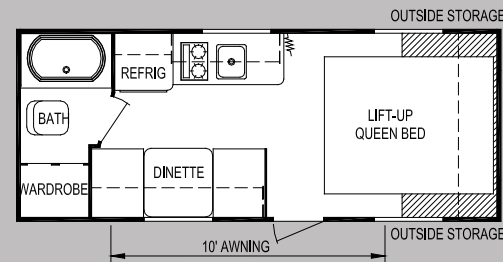
Model 140W



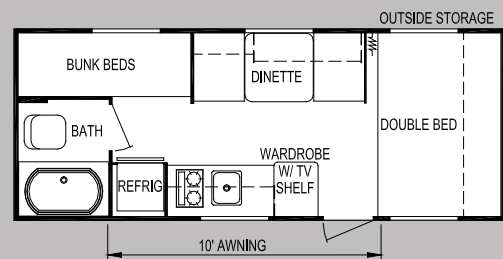
Model 170W



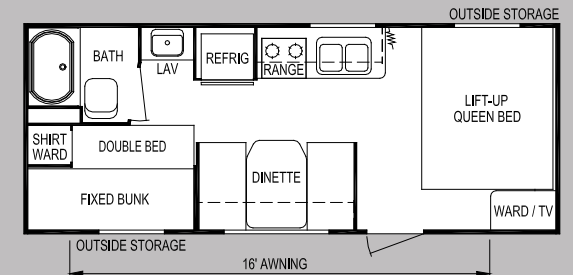
Model 173W



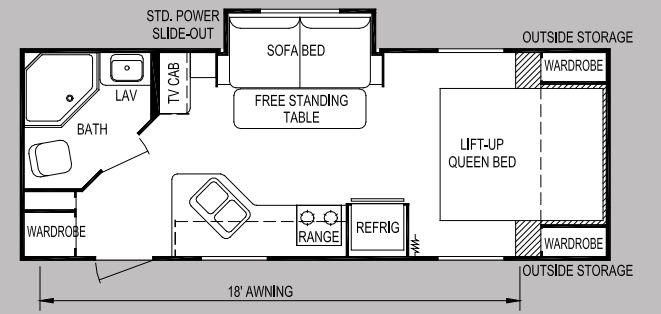
Model 183W



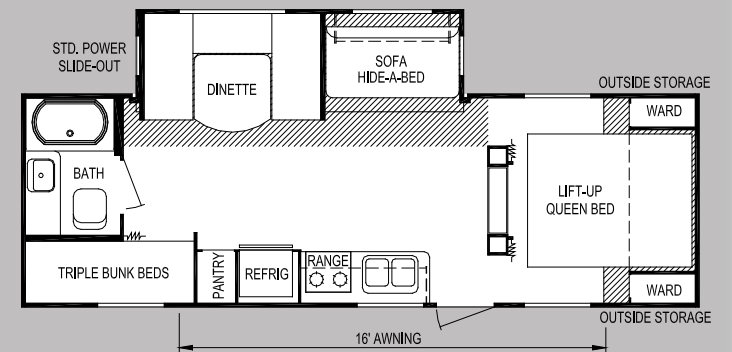
Model 186W



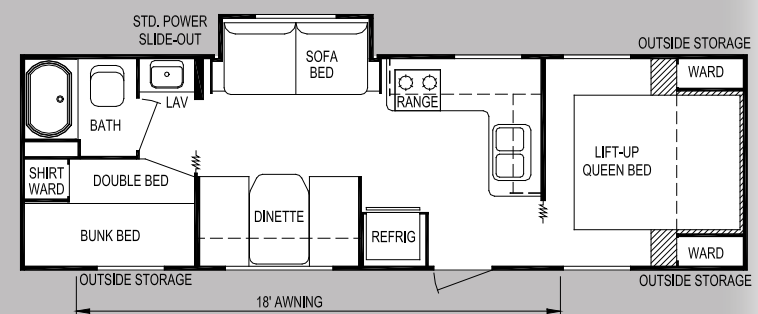
Model 216W



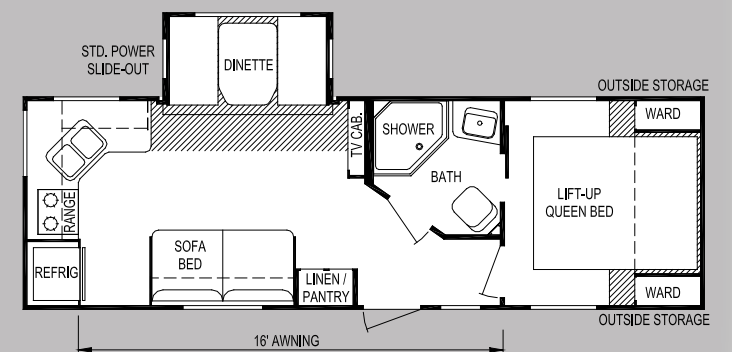
Model 239W



Model 264W



Model 273W



Model 277W

Specifications

Model		140W	170W	173W	183W	186W	216W	239W	264W	273W	277W
Weights	Unloaded Vehicle Weight (see Note 2)	2,025	2,725	2,450	2,450	2,475	3,550	4,000	5,275	5,025	5,925
	Dry Hitch Weight	300	325	400	325	325	525	550	775	750	650
	Dry Axle Weight	1,725	2,400	2,050	2,125	2,150	3,025	3,450	4,500	4,275	5,275
	GVWR (Total Capacity of Trailer)	2,850	3,850	3,850	3,850	3,850	5,600	6,200	7,750	7,750	7,750
Accommodations	Carrying Capacity (see Note 2)	750	1,000	1,300	1,300	1,275	1,900	2,050	2,275	2,525	1,600
	Sleeping (standard / optional)	3	3	4	3	5	6	4	8	8	6
	Bed Size	N/A	54" x 80"	54" x 80"	60" x 74"	54" x 80"	60" x 74"	60" x 74"	60" x 74"	60" x 74"	60" x 74"
	Second Bed Size	N/A	N/A	N/A	N/A	(2) 28" x 76"	48" x 74" 28" x 76"	N/A	(3) 28" x 76"	48" x 74" 28" x 76"	N/A
Measurements	Dinette Size	52" x 80"	N/A	52" x 80"	30" x 76"	30" x 76"	40" x 71"	N/A	48" x 79"	40" x 71"	40" x 71"
	Sofa	22" x 59"	42" x 64"	N/A	N/A	N/A	N/A	42" x 64"	44" x 74"	42" x 64"	42" x 64"
	Exterior Length (see Note 3)	15'-10"	18'-4"	20'-1"	20'-4"	20'-6"	24'-0"	25'-11"	28'-9"	30'-8"	29'-0"
	Exterior Width (see Note 3)	7'-0"	7'-0"	7'-0"	7'-0"	7'-0"	8'-0"	8'-0"	8'-0"	8'-0"	8'-0"
Capacities	Exterior Height (see Note 3)	8'-2"	8'-4"	8'-4"	8'-4"	8'-4"	10'-2"	10'-2"	11'-0"	10'-3"	11'-0"
	Interior Height	73"	73"	73"	73"	73"	78"	78"	78"	78"	78"
	Fresh Water System (gallons)	17	27	17	27	27	36	36	36	36	36
	Gray Water Tank (gallons)	15	15	15	15	15	32	31	56	50	50
Other	Black Water Tank (gallons)	9	9	9	9	9	31	31	31	40	31
	Air Conditioner Size (Btu)	5,000	5,000	5,000	5,000	5,000	13,500 (opt.)	13,500 (opt.)	13,500 (opt.)	13,500 (opt.)	13,500 (opt.)
	Awning Size	10'	12'	10'	10'	10'	16'	18'	16'	18'	16'
	Converter Size (amps)	35	35	35	35	35	35	35	35	35	35
Options	Furnace Rating (Btu)	16,000	16,000	16,000	16,000	16,000	25,000	25,000	25,000	25,000	25,000
	Propane Gas Capacity (pounds)	20	20	20	20	20	40	40	40	40	40
	Tires	ST185/80R13-C	ST205/75R14-C	ST205/75R14-C	ST205/75R14-C	ST205/75R14-C	ST205/75R14-C	ST205/75R14-C	ST205/75R15-C	ST205/75R15-C	ST205/75R15-C
	Water Heater (gallons)	6	6	6	6	6	6	6	6	6	6

Notes

- (1) All weights, dimensions, and capacities shown are approximate values.
- (2) Unloaded vehicle weight and carrying capacity will vary depending upon optional equipment. Full propane tanks are factored into carrying capacity. Skyline weighs every unit at the factory. See trailer weight information label located inside the front entry door for specific unloaded vehicle weight and cargo carrying capacity.
- (3) Dimensions stated to industry standards. Exterior length includes approximately a four foot hitch on travel trailers. Exterior height includes air conditioner, if installed. Exterior width does not include the width of the awning, if installed.